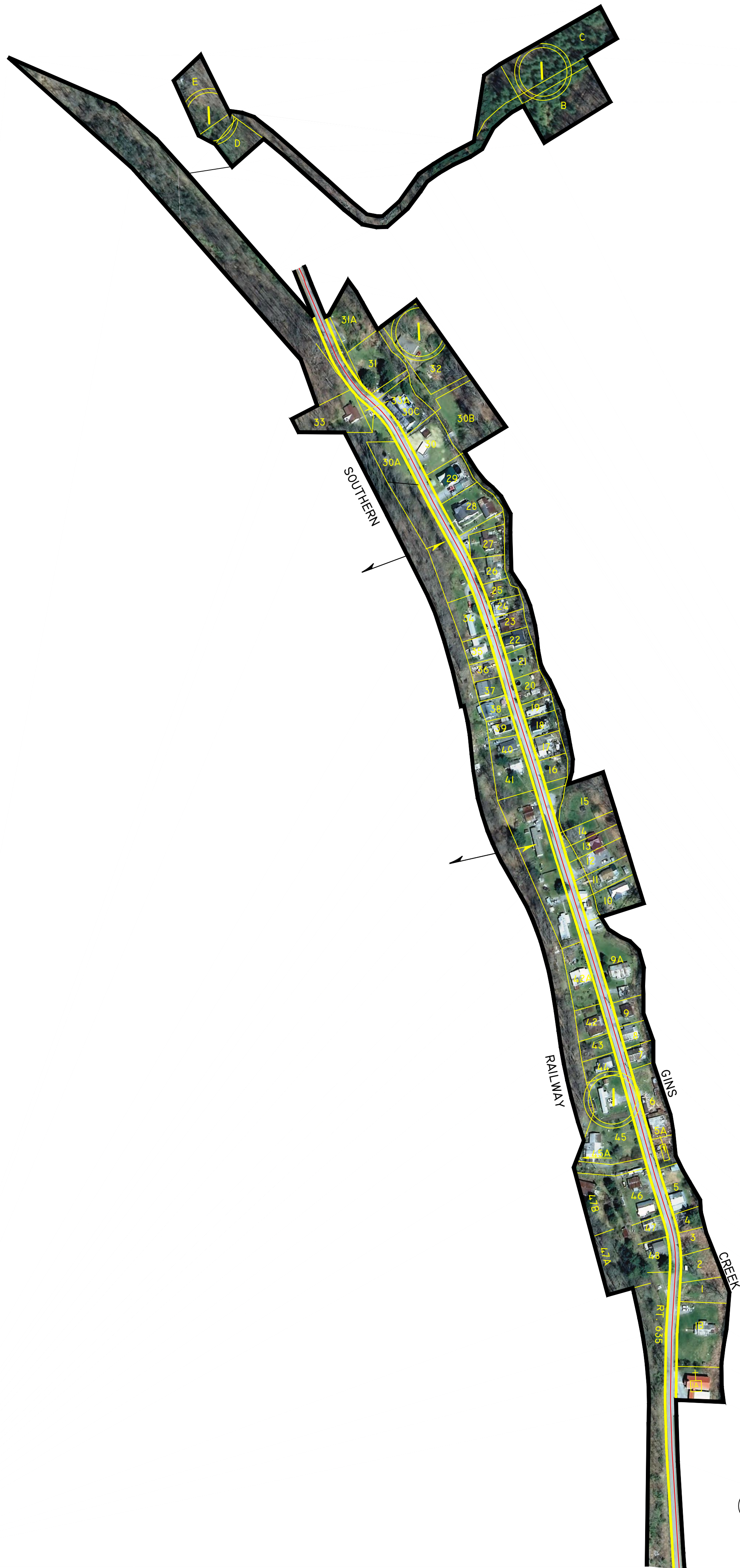


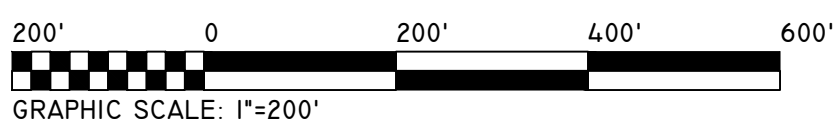
LEE COUNTY, VIRGINIA



① THE KEMMERER GEM COAL COMPANY LOTS IN DARBY CAMP AND VICINITY

LOCATION INSERT I2C SHEET 2 OF 2

SHEET 1 OF 2



ROCKY STATION

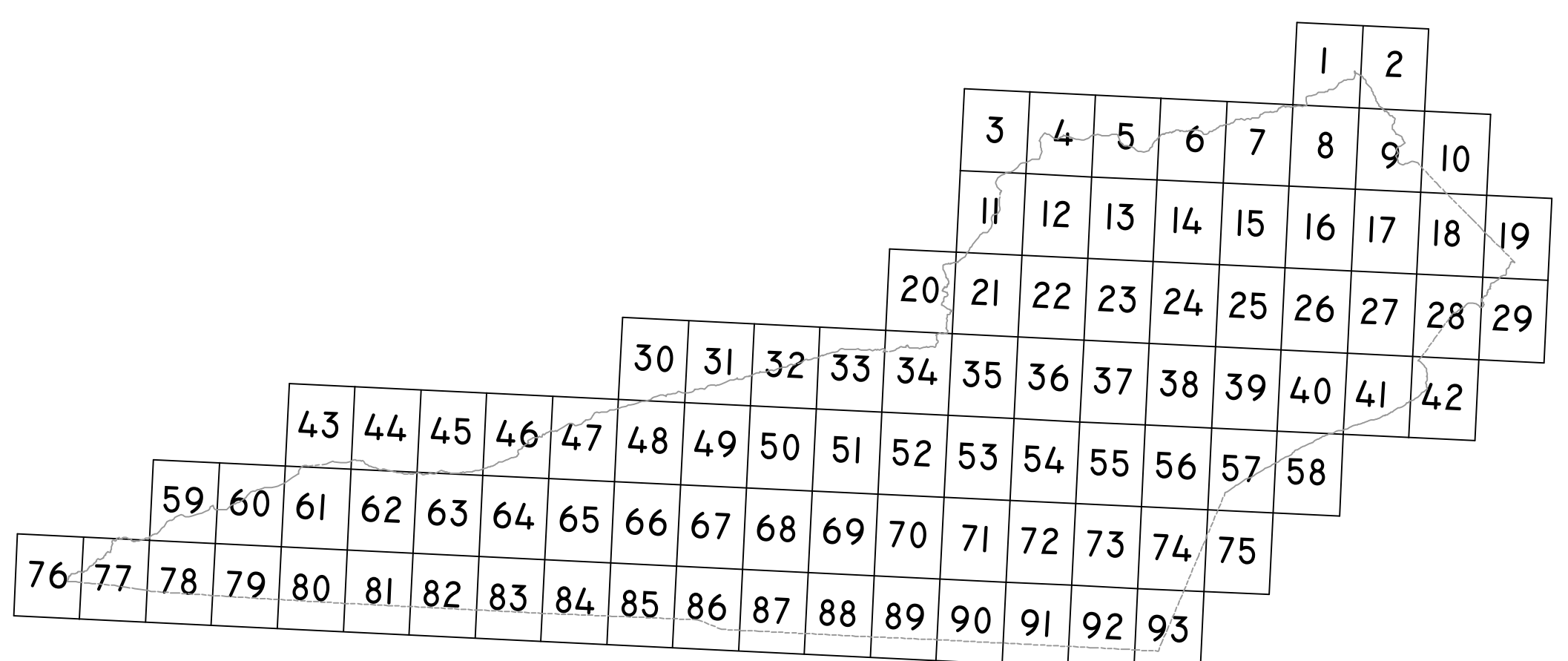
MAGISTERIAL

DISTRICT

SECTION 12
INSERT C1

DISCLAIMER:

THE INFORMATION SHOWN HEREON IS NOT BASED ON A CURRENT FIELD SURVEY. IT WAS COMPILED FROM PRIOR COUNTY TAX MAPS, SUBDIVISION PLATS, PARTITION PLATS, AERIAL PHOTOGRAPHY AND OTHER SOURCES. PLEASE NOTIFY THE LEE COUNTY COMMISSIONER OF THE REVENUE OFFICE IF ANY ERRORS OR OMISSIONS OCCUR. LEE COUNTY WILL NOT BE LIABLE FOR ANY DAMAGES, THAT MAY ARISE FROM THE USE OF THIS MAP. PROPERTY LINES AS SHOWN ARE SUBJECT TO A CURRENT FIELD SURVEY BY A CERTIFIED VIRGINIA LAND SURVEYOR. AERIAL IMAGERY ©2011 COMMONWEALTH OF VIRGINIA.



VICINITY MAP: 1" = 5 MILES

