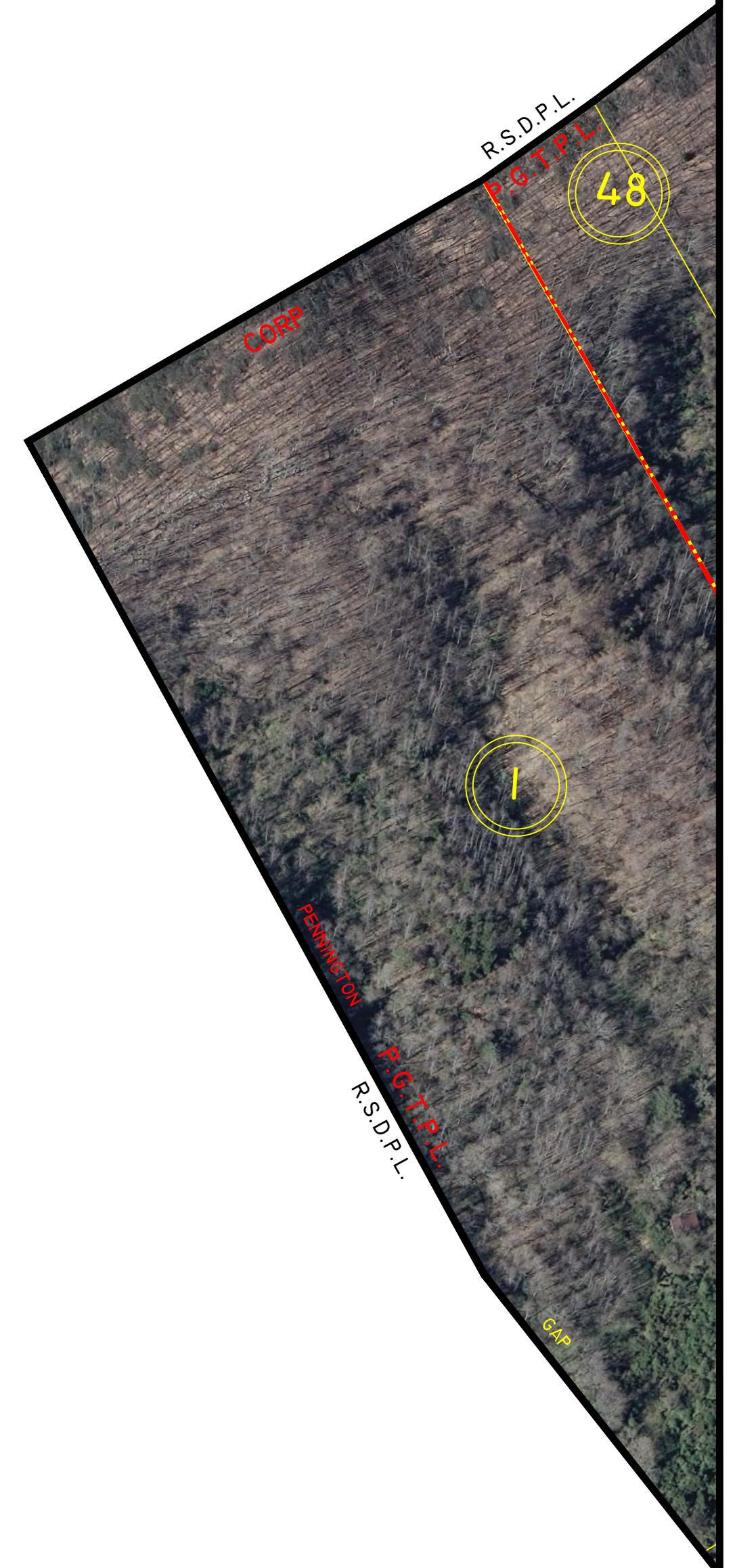


LEE COUNTY, VIRGINIA

- ① ACREAGE PARCELS SHEET 7
- ④⑧ C.B. WADDELL PROPERTY - P.B. C, SLIDE 110
- ⑦④ EFFIE MAE KEEL ESTATE - P.B. D, SLIDE 036
- PENNINGTON GAP NEW CORPORATE LIMITS-P.B. C, SLIDE 185



SHEET 7 OF 7

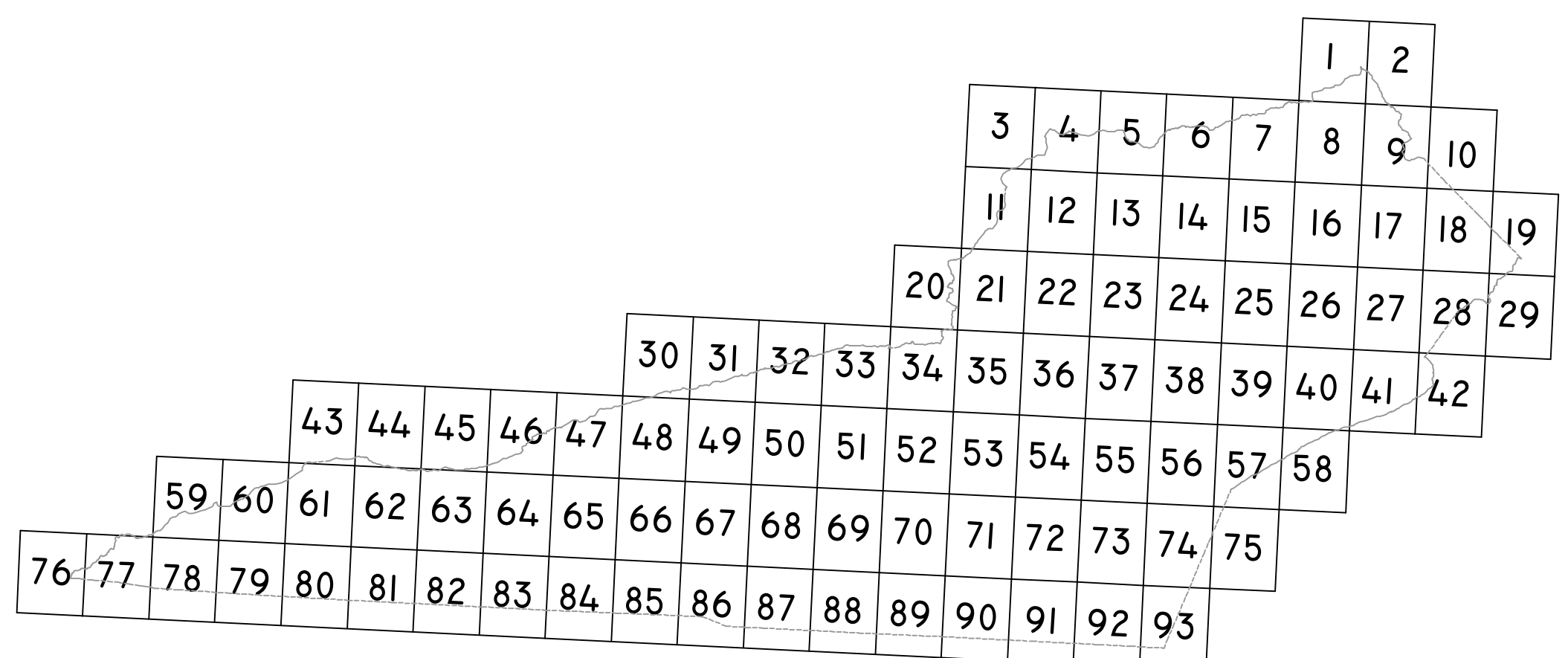


ROCKY STATION
MAGISTERIAL
DISTRICT

SECTION 23
INSERT E7

DISCLAIMER:

THE INFORMATION SHOWN HEREON IS NOT BASED ON A CURRENT FIELD SURVEY. IT WAS COMPILED FROM PRIOR COUNTY TAX MAPS, SUBDIVISION PLATS, PARTITION PLATS, AERIAL PHOTOGRAPHY AND OTHER SOURCES. PLEASE NOTIFY THE LEE COUNTY COMMISSIONER OF THE REVENUE OFFICE IF ANY ERRORS OR OMISSIONS OCCUR. LEE COUNTY WILL NOT BE LIABLE FOR ANY DAMAGES, THAT MAY ARISE FROM THE USE OF THIS MAP. PROPERTY LINES AS SHOWN ARE SUBJECT TO A CURRENT FIELD SURVEY BY A CERTIFIED VIRGINIA LAND SURVEYOR. AERIAL IMAGERY ©2011 COMMONWEALTH OF VIRGINIA.



VICINITY MAP: 1"= 5 MILES

