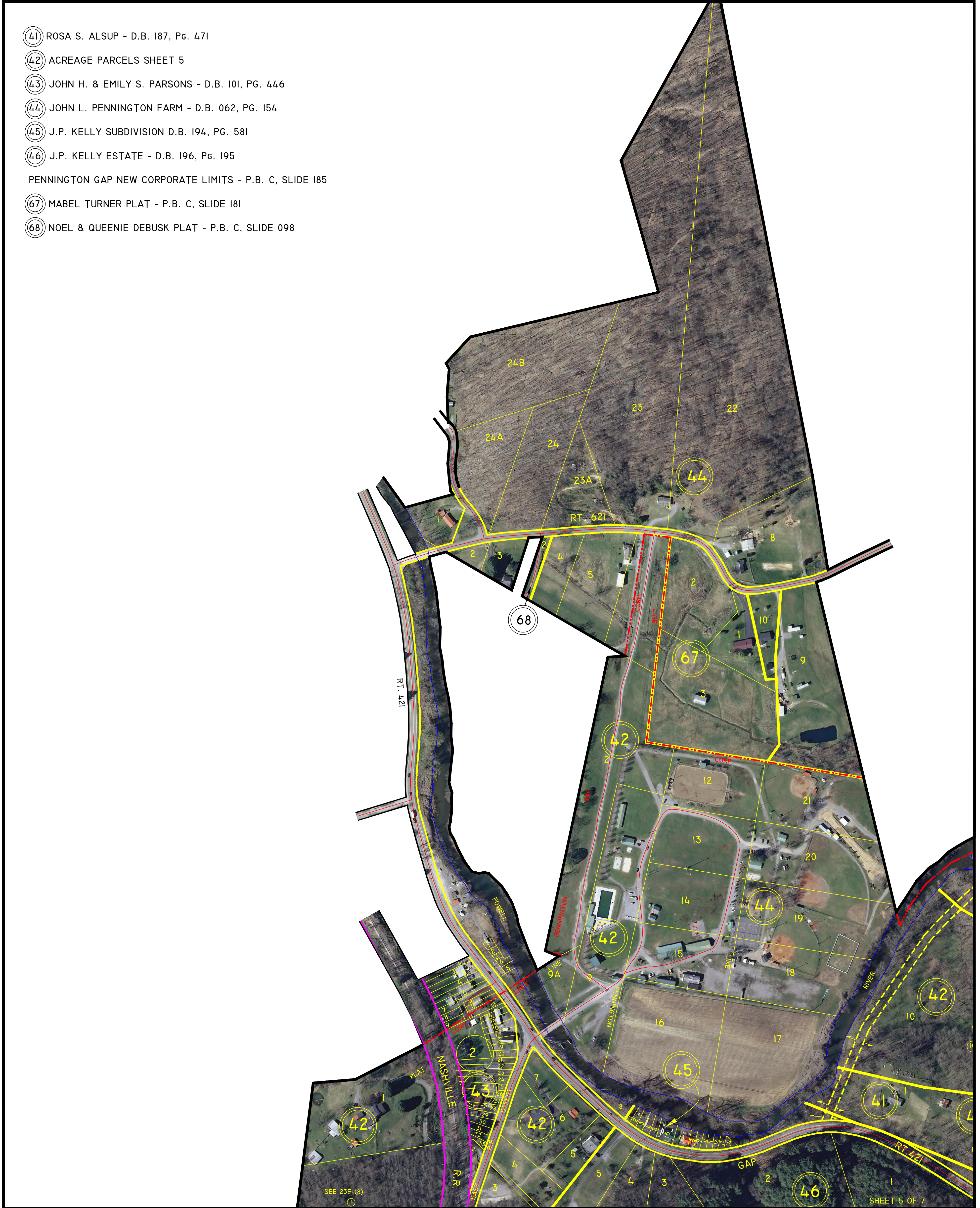


LEE COUNTY, VIRGINIA

- ④1 ROSA S. ALSUP - D.B. 187, Pg. 471
- ④2 ACREAGE PARCELS SHEET 5
- ④3 JOHN H. & EMILY S. PARSONS - D.B. 101, PG. 446
- ④4 JOHN L. PENNINGTON FARM - D.B. 062, PG. 154
- ④5 J.P. KELLY SUBDIVISION D.B. 194, PG. 581
- ④6 J.P. KELLY ESTATE - D.B. 196, Pg. 195
- PENNINGTON GAP NEW CORPORATE LIMITS - P.B. C, SLIDE 185
- ⑥7 MABEL TURNER PLAT - P.B. C, SLIDE 181
- ⑥8 NOEL & QUEENIE DEBUSK PLAT - P.B. C, SLIDE 098



INSERT 23E SHEET 2

PENNINGTON GAP
ROCKY STATION MAGISTERIAL
DISTRICT

SECTION 23
INSERT E5

DISCLAIMER:

THE INFORMATION SHOWN HEREON IS NOT BASED ON A CURRENT FIELD SURVEY. IT WAS COMPILED FROM PRIOR COUNTY TAX MAPS, SUBDIVISION PLATS, PARTITION PLATS, AERIAL PHOTOGRAPHY AND OTHER SOURCES. PLEASE NOTIFY THE LEE COUNTY COMMISSIONER OF THE REVENUE OFFICE IF ANY ERRORS OR OMISSIONS OCCUR. LEE COUNTY WILL NOT BE LIABLE FOR ANY DAMAGES THAT MAY ARISE FROM THE USE OF THIS MAP. PROPERTY LINES AS SHOWN ARE SUBJECT TO A CURRENT FIELD SURVEY BY A CERTIFIED VIRGINIA LAND SURVEYOR. AERIAL IMAGERY © 2011 COMMONWEALTH OF VIRGINIA.

