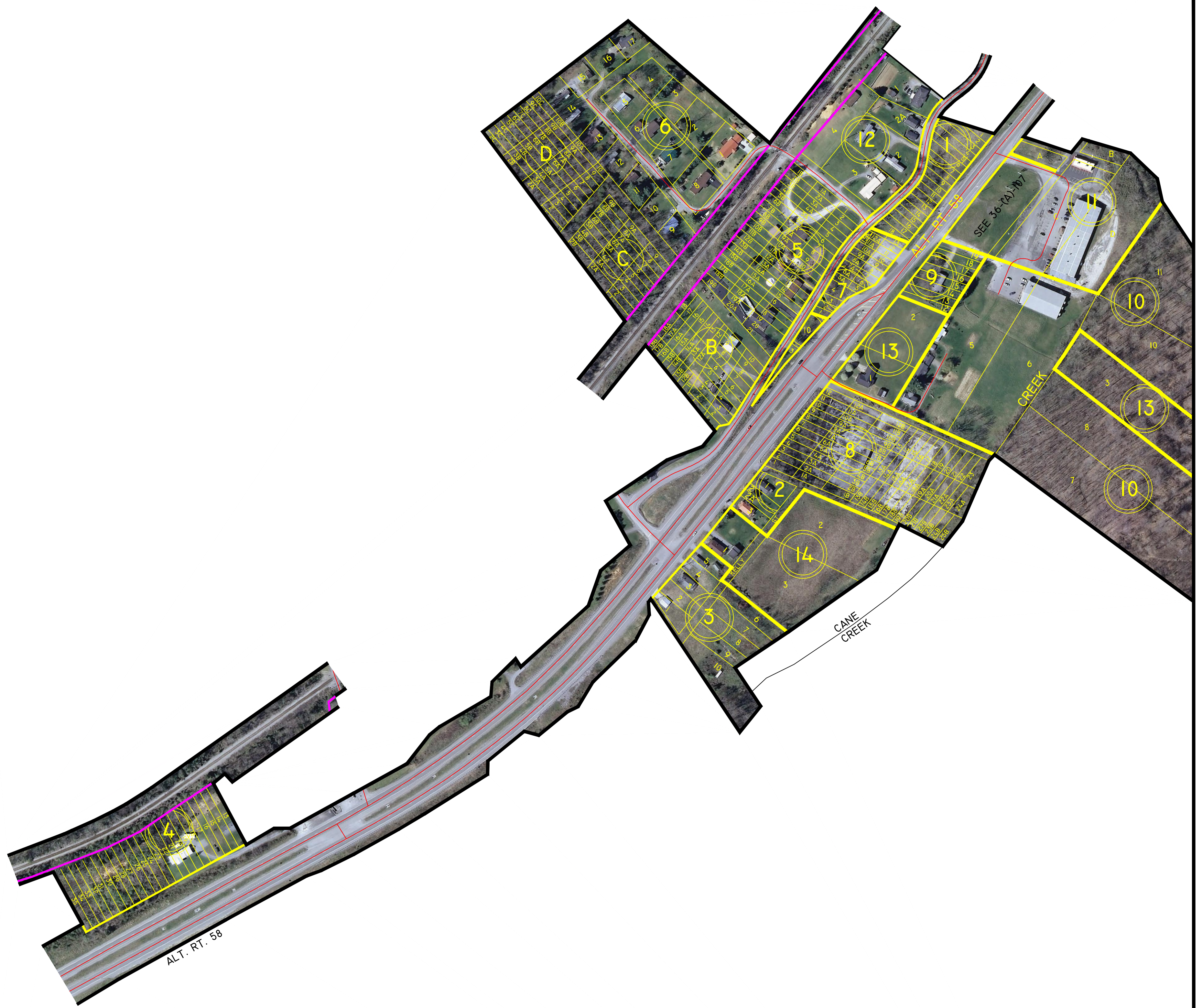


LEE COUNTY, VIRGINIA



- ① ORVILLE P. KELLY PROPERTY-D.B. 112, Pg. 158
- ② O.M. HOWARD SUBDIVISION-D.B. 093, Pg. 196
- ③ C.E. & R.M. WITT SUBDIVISION-D.B. 102, Pg. 298
- ④ O.M. HOWARD ADDITION-D.B. 131, Pg. 071
- ⑤ JOHN CLINTON SLEMP PROPERTY-D.B. 214, Pg. 508
- ⑥ J. ROY TOMLINSON SUBDIVISION-D.B. 248, Pg. 464
- ⑦ STEWART PROPERTY-D.B. 225, Pg. 335
- ⑧ COX PROPERTY-P.B. A, SLIDE 072
- ⑨ THOMPSON PROPERTY-P.B. A, SLIDE 086
- ⑩ SLEMP PROPERTY-P.B. B, SLIDE 029
- ⑪ COZART PROPERTY-P.B. C, SLIDE 086
- ⑫ COMBS PROPERTY-D.B. 351, Pg. 105
- ⑬ CHARLIE POE ESTATE-INSTRUMENT No. 0702748

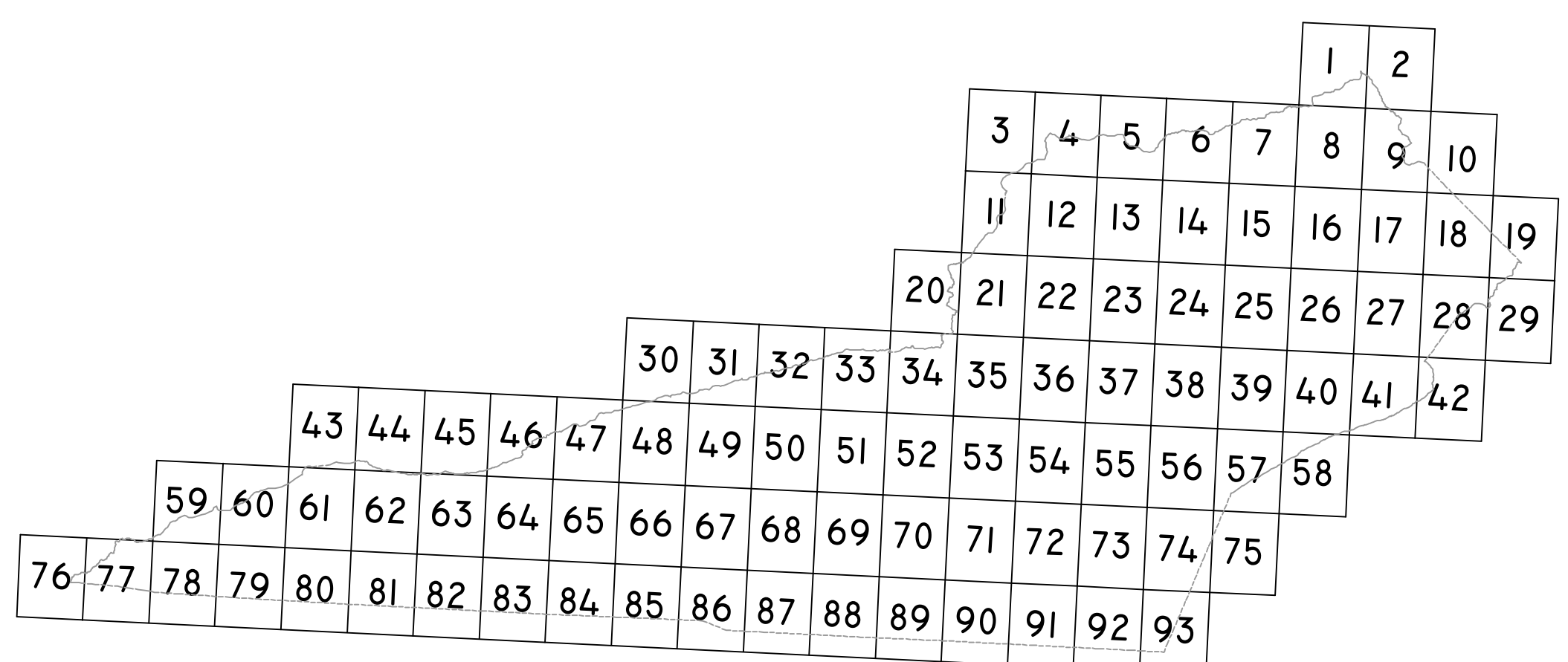


JONESVILLE
MAGISTERIAL
DISTRICT

SECTION 36
INSERT AI

DISCLAIMER:

THE INFORMATION SHOWN HEREON IS NOT BASED ON A CURRENT FIELD SURVEY. IT WAS COMPILED FROM PRIOR COUNTY TAX MAPS, SUBDIVISION PLATS, PARTITION PLATS, AERIAL PHOTOGRAPHY AND OTHER SOURCES. PLEASE NOTIFY THE LEE COUNTY COMMISSIONER OF THE REVENUE OFFICE IF ANY ERRORS OR OMISSIONS OCCUR. LEE COUNTY WILL NOT BE LIABLE FOR ANY DAMAGES, THAT MAY ARISE FROM THE USE OF THIS MAP. PROPERTY LINES AS SHOWN ARE SUBJECT TO A CURRENT FIELD SURVEY BY A CERTIFIED VIRGINIA LAND SURVEYOR. AERIAL IMAGERY ©2011 COMMONWEALTH OF VIRGINIA.



VICINITY MAP: 1"= 5 MILES

