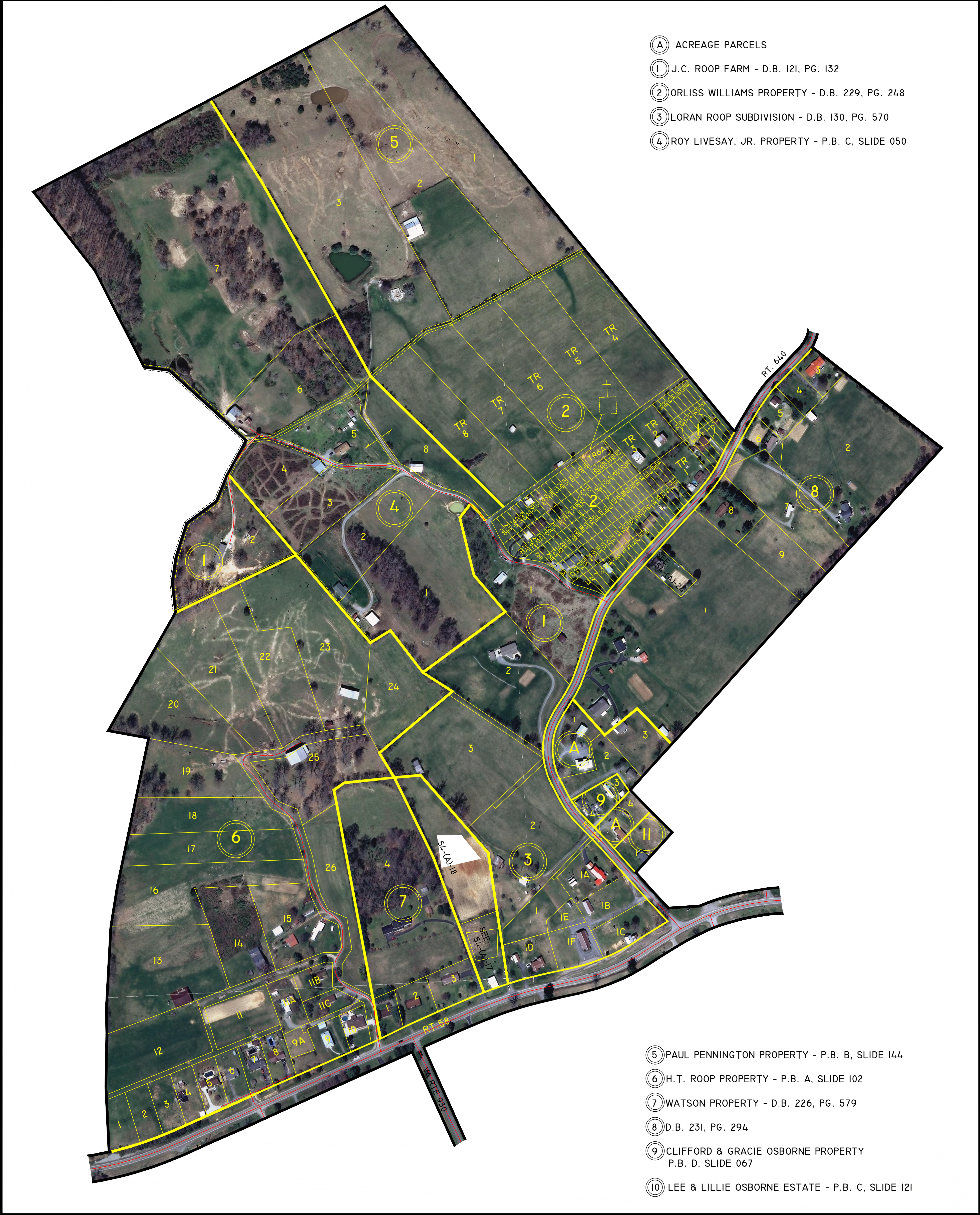
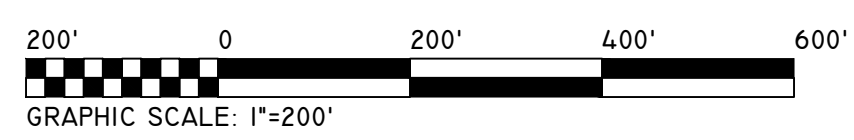


LEE COUNTY, VIRGINIA



- Ⓐ ACREAGE PARCELS
- ① J.C. ROOP FARM - D.B. 121, PG. 132
- ② ORLISS WILLIAMS PROPERTY - D.B. 229, PG. 248
- ③ LORAN ROOP SUBDIVISION - D.B. 130, PG. 570
- ④ ROY LIVESAY, JR. PROPERTY - P.B. C, SLIDE 050

- ⑤ PAUL PENNINGTON PROPERTY - P.B. B, SLIDE 144
- ⑥ H.T. ROOP PROPERTY - P.B. A, SLIDE 102
- ⑦ WATSON PROPERTY - D.B. 226, PG. 579
- ⑧ D.B. 231, PG. 294
- ⑨ CLIFFORD & GRACIE OSBORNE PROPERTY
P.B. D, SLIDE 067
- ⑩ LEE & LILLIE OSBORNE ESTATE - P.B. C, SLIDE 121



JONESVILLE
MAGISTERIAL
DISTRICT

SECTION 54
INSERT A

DISCLAIMER:
THE INFORMATION SHOWN HEREON IS NOT BASED ON A CURRENT FIELD SURVEY. IT WAS COMPILED FROM PRIOR COUNTY TAX MAPS, SUBDIVISION PLATS, PARTITION PLATS, AERIAL PHOTOGRAPHY AND OTHER SOURCES. PLEASE NOTIFY THE LEE COUNTY COMMISSIONER OF THE REVENUE OFFICE IF ANY ERRORS OR OMISSIONS OCCUR. LEE COUNTY WILL NOT BE LIABLE FOR ANY DAMAGES, THAT MAY ARISE FROM THE USE OF THIS MAP. PROPERTY LINES AS SHOWN ARE SUBJECT TO A CURRENT FIELD SURVEY BY A CERTIFIED VIRGINIA LAND SURVEYOR. AERIAL IMAGERY ©2011 COMMONWEALTH OF VIRGINIA.

