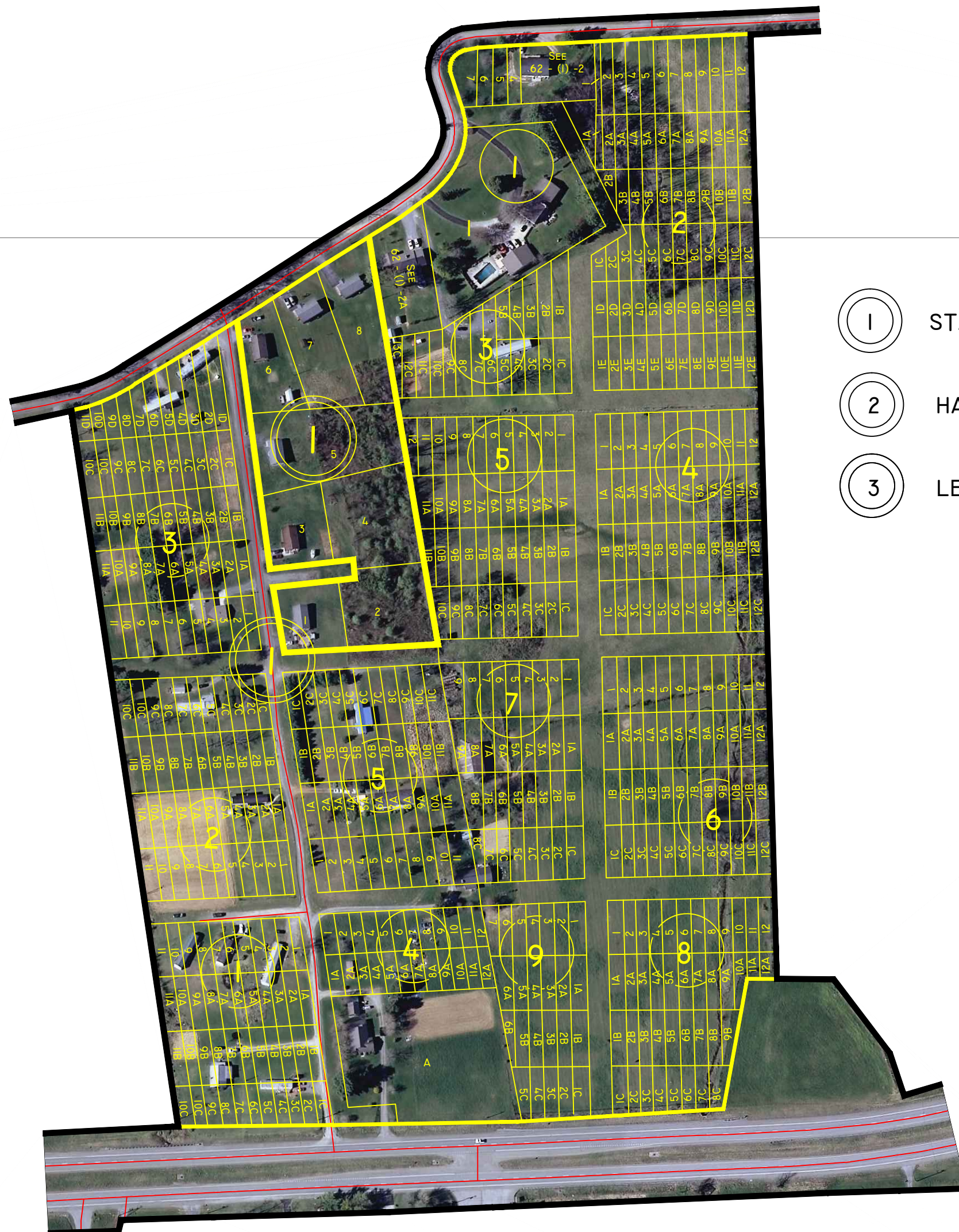
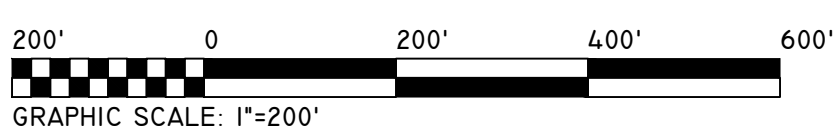


LEE COUNTY, VIRGINIA



- ① STAPLETON FARM - DEED BOOK 292, PAGE 735
- ② HAGY PROPERTY - PLAT CABINET B, PLAT SLIDE 100
- ③ LEE COUNTY REDEVELOPMENT AND HOUSING AUTHORITY PROPERTY
PLAT CABINET A, PLAT SLIDE 050



 ROSE HILL

 MAGISTERIAL

 DISTRICT

SECTION _____ 62
 INSERT _____ B

DISCLAIMER:

THE INFORMATION SHOWN HEREON IS NOT BASED ON A CURRENT FIELD SURVEY. IT WAS COMPILED FROM PRIOR COUNTY TAX MAPS, SUBDIVISION PLATS, PARTITION PLATS, AERIAL PHOTOGRAPHY AND OTHER SOURCES. PLEASE NOTIFY THE LEE COUNTY COMMISSIONER OF THE REVENUE OFFICE IF ANY ERRORS OR OMISSIONS OCCUR. LEE COUNTY WILL NOT BE LIABLE FOR ANY DAMAGES, THAT MAY ARISE FROM THE USE OF THIS MAP. PROPERTY LINES AS SHOWN ARE SUBJECT TO A CURRENT FIELD SURVEY BY A CERTIFIED VIRGINIA LAND SURVEYOR. AERIAL IMAGERY ©2011 COMMONWEALTH OF VIRGINIA.

