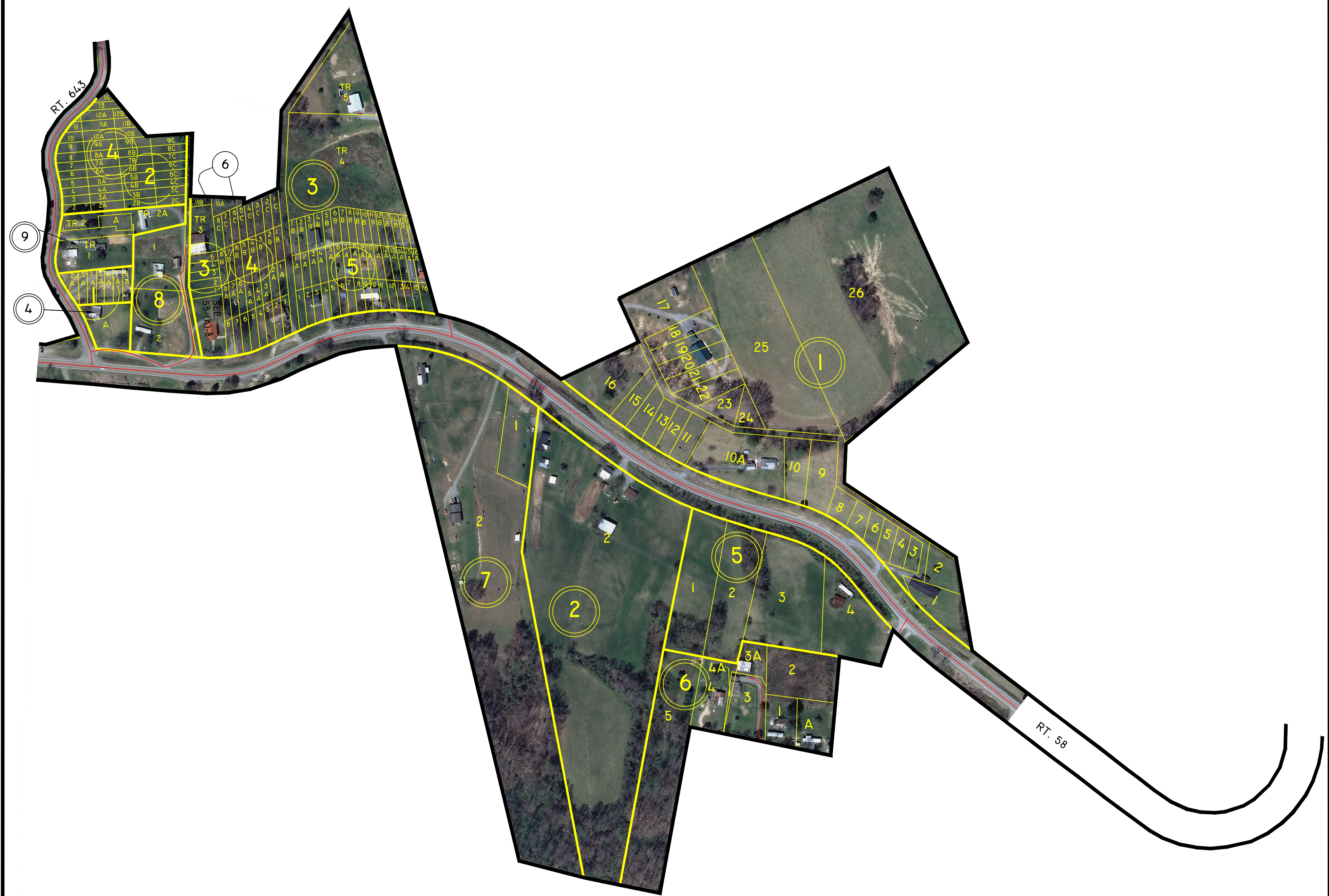


LEE COUNTY, VIRGINIA



- ① BRADLEY POTEET LAND-D.B. 142, Pg. 067
- ② GRACE V. WOLIVER LAND -D.B. 150, Pg. 219
- ③ W.R. NEWMAN LAND - P.B. A, SLIDE 029
- ④ WADE PARSONS LAND - D.B. 218, Pg. 193
- ⑤ KERMIT LIVESAY LAND - D.B. 344, Pg. 813
- ⑥ MACK & LOIS JONES LAND - P.B. B, SLIDE 119
- ⑦ JAMES LIVESAY PROPRETY - P.B. C, SLIDE 054
- ⑧ BISHOP BAILEY PROPRETY - INSTRUMENT No. 0308902
- ⑨ RAY HALL PROPERTY - P.B. C, SLIDE 044

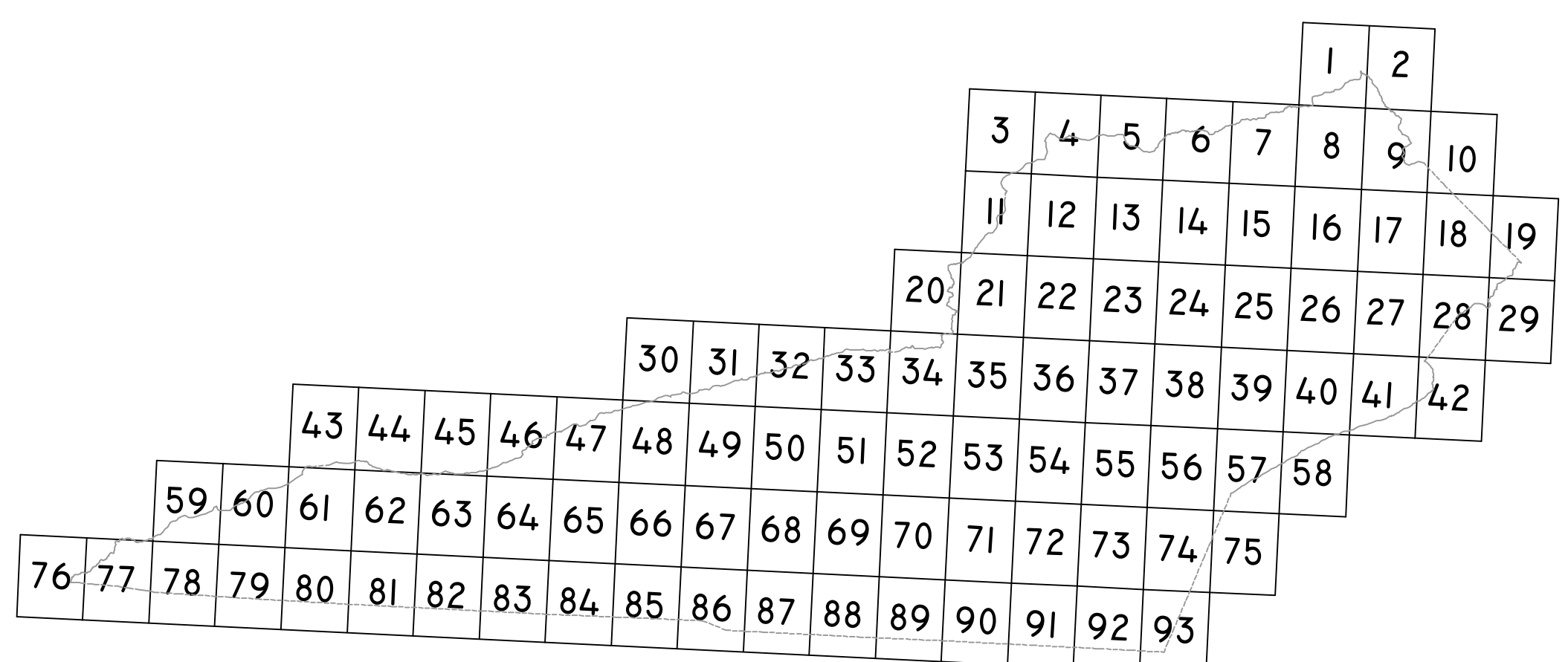


JONESVILLE
MAGISTERIAL
DISTRICT

SECTION 55
INSERT A

DISCLAIMER:

THE INFORMATION SHOWN HEREON IS NOT BASED ON A CURRENT FIELD SURVEY. IT WAS COMPILED FROM PRIOR COUNTY TAX MAPS, SUBDIVISION PLATS, PARTITION PLATS, AERIAL PHOTOGRAPHY AND OTHER SOURCES. PLEASE NOTIFY THE LEE COUNTY COMMISSIONER OF THE REVENUE OFFICE IF ANY ERRORS OR OMISSIONS OCCUR. LEE COUNTY WILL NOT BE LIABLE FOR ANY DAMAGES, THAT MAY ARISE FROM THE USE OF THIS MAP. PROPERTY LINES AS SHOWN ARE SUBJECT TO A CURRENT FIELD SURVEY BY A CERTIFIED VIRGINIA LAND SURVEYOR. AERIAL IMAGERY ©2011 COMMONWEALTH OF VIRGINIA.



VICINITY MAP: 1"= 5 MILES

