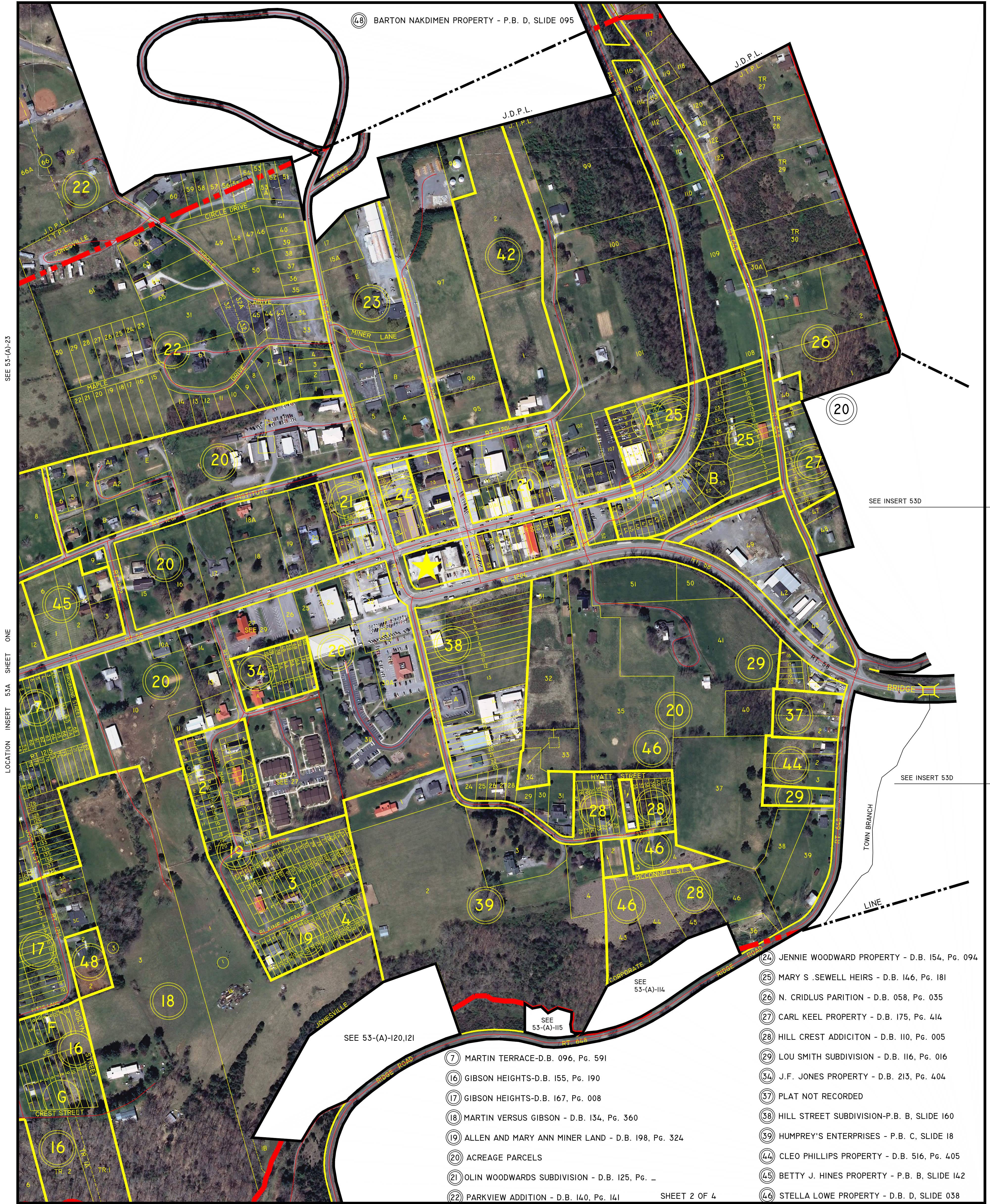


LEE COUNTY, VIRGINIA

48 BARTON NAKDIMEN PROPERTY - P.B. D, SLIDE 095



SEE 53-(A)-23

LOCATION INSERT 53A SHEET ONE

SEE INSERT 53D

SEE INSERT 53D

SEE 53-(A)-120,121

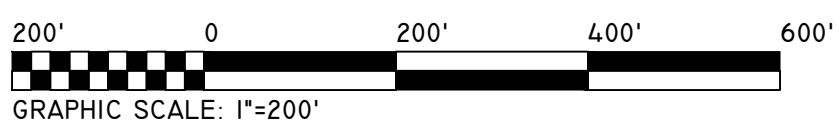
SEE 53-(A)-115

SEE 53-(A)-114

- 7 MARTIN TERRACE-D.B. 096, Pg. 591
- 16 GIBSON HEIGHTS-D.B. 155, Pg. 190
- 17 GIBSON HEIGHTS-D.B. 167, Pg. 008
- 18 MARTIN VERSUS GIBSON - D.B. 134, Pg. 360
- 19 ALLEN AND MARY ANN MINER LAND - D.B. 198, Pg. 324
- 20 ACREAGE PARCELS
- 21 OLIN WOODWARDS SUBDIVISION - D.B. 125, Pg. --
- 22 PARKVIEW ADDITION - D.B. 140, Pg. 141

- 24 JENNIE WOODWARD PROPERTY - D.B. 154, Pg. 094
- 25 MARY S .SEWELL HEIRS - D.B. 146, Pg. 181
- 26 N. CRIDLUS PARTITION - D.B. 058, Pg. 035
- 27 CARL KEEL PROPERTY - D.B. 175, Pg. 414
- 28 HILL CREST ADDICITON - D.B. 110, Pg. 005
- 29 LOU SMITH SUBDIVISION - D.B. 116, Pg. 016
- 34 J.F. JONES PROPERTY - D.B. 213, Pg. 404
- 37 PLAT NOT RECORDED
- 38 HILL STREET SUBDIVISION-P.B. B, SLIDE 160
- 39 HUMPREY'S ENTERPRISES - P.B. C, SLIDE 18
- 44 CLEO PHILLIPS PROPERTY - D.B. 516, Pg. 405
- 45 BETTY J. HINES PROPERTY - P.B. B, SLIDE 142
- 46 STELLA LOWE PROPERTY - D.B. D, SLIDE 038

SHEET 2 OF 4



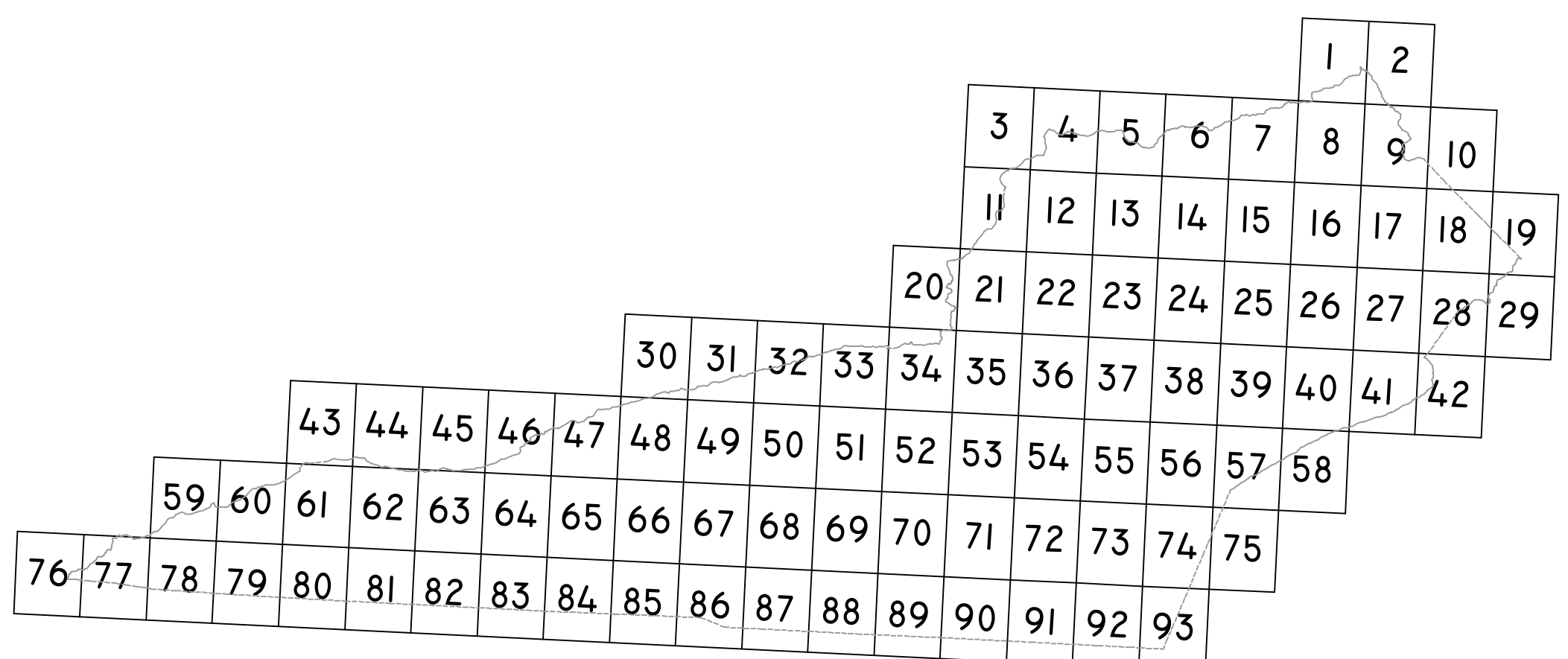
LOCATION INSERT 53B

JONESVILLE TOWN
JONESVILLE MAGISTERIAL
DISTRICT

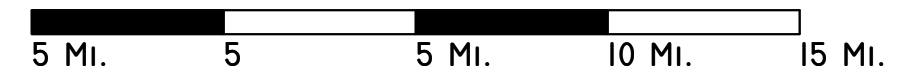
SECTION 53
INSERT A2

DISCLAIMER:

THE INFORMATION SHOWN HEREON IS NOT BASED ON A CURRENT FIELD SURVEY. IT WAS COMPILED FROM PRIOR COUNTY TAX MAPS, SUBDIVISION PLATS, PARTITION PLATS, AERIAL PHOTOGRAPHY AND OTHER SOURCES. PLEASE NOTIFY THE LEE COUNTY COMMISSIONER OF THE REVENUE OFFICE IF ANY ERRORS OR OMISSIONS OCCUR. LEE COUNTY WILL NOT BE LIABLE FOR ANY DAMAGES, THAT MAY ARISE FROM THE USE OF THIS MAP. PROPERTY LINES AS SHOWN ARE SUBJECT TO A CURRENT FIELD SURVEY BY A CERTIFIED VIRGINIA LAND SURVEYOR. AERIAL IMAGERY ©2011 COMMONWEALTH OF VIRGINIA.



VICINITY MAP: 1"= 5 MILES



INSERT 53A SHEET 3