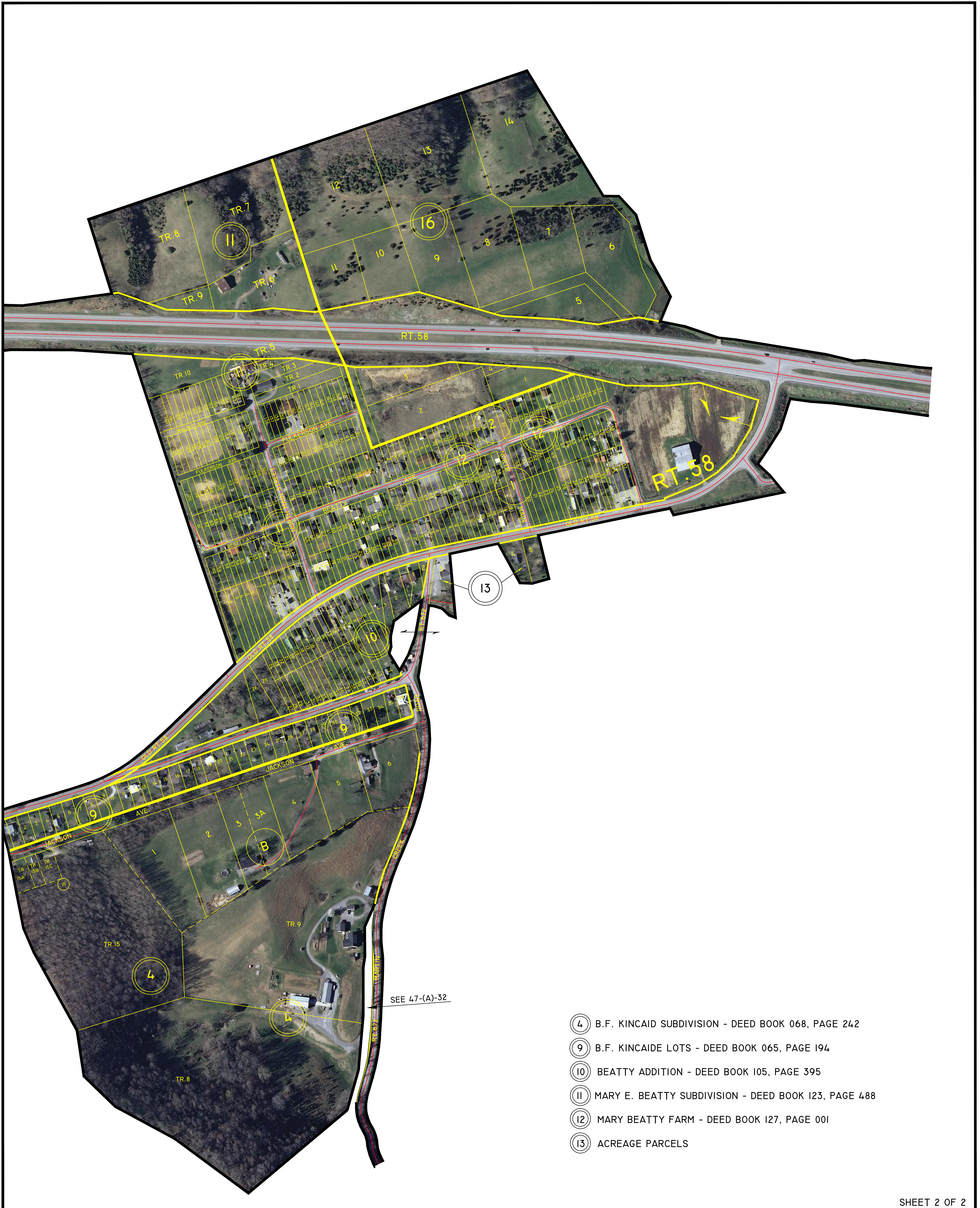


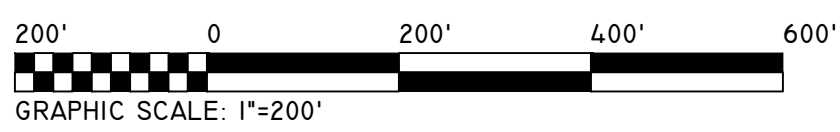
LEE COUNTY, VIRGINIA



SEE 47-(A)-32

- ④ B.F. KINCAID SUBDIVISION - DEED BOOK 068, PAGE 242
- ⑨ B.F. KINCAIDE LOTS - DEED BOOK 065, PAGE 194
- ⑩ BEATTY ADDITION - DEED BOOK 105, PAGE 395
- ⑪ MARY E. BEATTY SUBDIVISION - DEED BOOK 123, PAGE 488
- ⑫ MARY BEATTY FARM - DEED BOOK 127, PAGE 001
- ⑬ ACREAGE PARCELS

SHEET 2 OF 2

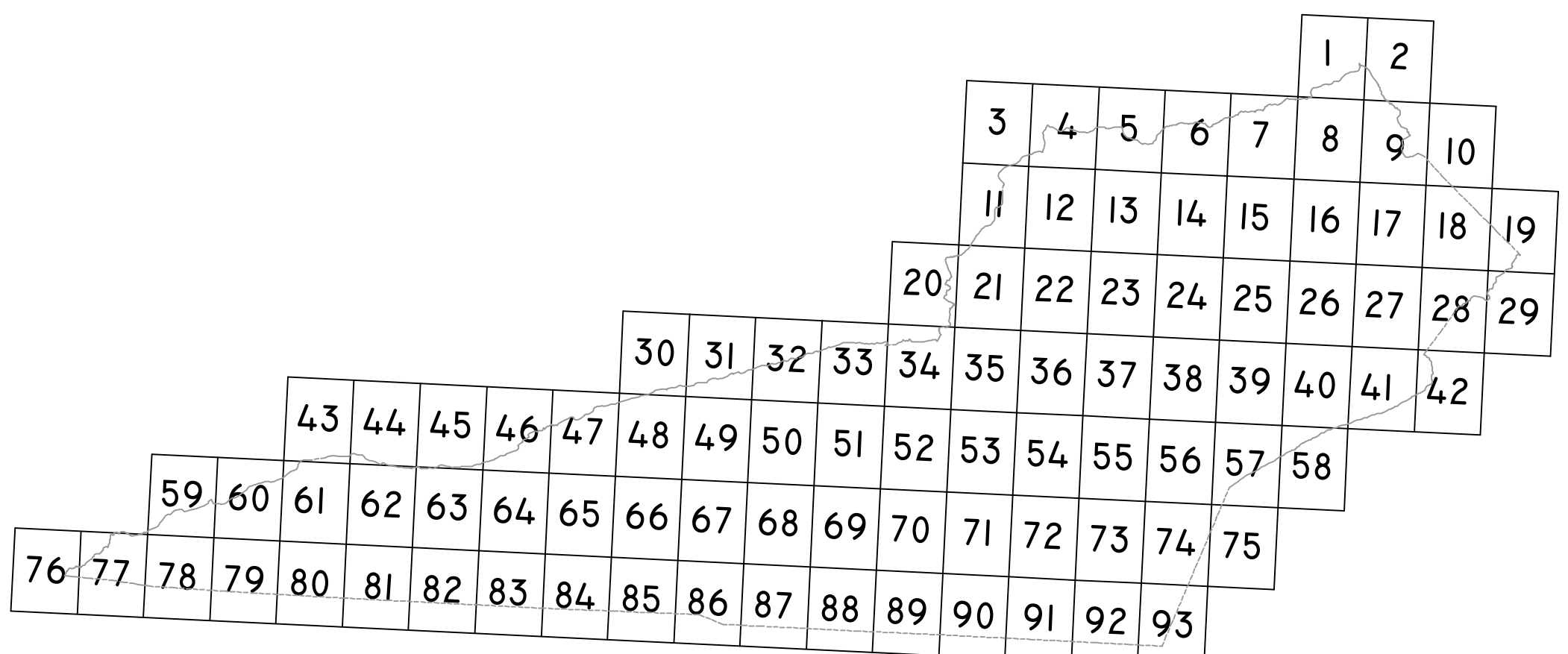


ROSE HILL
MAGISTERIAL
DISTRICT

SECTION 47
INSERT A2

DISCLAIMER:

THE INFORMATION SHOWN HEREON IS NOT BASED ON A CURRENT FIELD SURVEY. IT WAS COMPILED FROM PRIOR COUNTY TAX MAPS, SUBDIVISION PLATS, PARTITION PLATS, AERIAL PHOTOGRAPHY AND OTHER SOURCES. PLEASE NOTIFY THE LEE COUNTY COMMISSIONER OF THE REVENUE OFFICE IF ANY ERRORS OR OMISSIONS OCCUR. LEE COUNTY WILL NOT BE LIABLE FOR ANY DAMAGES, THAT MAY ARISE FROM THE USE OF THIS MAP. PROPERTY LINES AS SHOWN ARE SUBJECT TO A CURRENT FIELD SURVEY BY A CERTIFIED VIRGINIA LAND SURVEYOR. AERIAL IMAGERY ©2011 COMMONWEALTH OF VIRGINIA.



VICINITY MAP: 1"= 5 MILES

